

2023

Norton Healthcare Foundation Annual Report

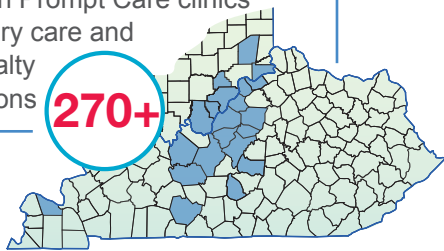
Norton Healthcare has stood as a pillar of the community for more than a century. Guided by our rich faith history and commitment to meeting our community's health care needs, there is no limit to what our care can do.

With more than 21,000 employees, Norton Healthcare continues to grow to meet the needs of our community. From caring for our newborns to our elders and everyone in between, Norton Healthcare provides compassionate, high-quality care close to home. In this report, you will find some of the ways you have had an impact on care for patients and families over the past year.

As the philanthropic arm of Norton Healthcare, the Norton Healthcare Foundation funds programs, equipment, facilities, research and education for patients and families receiving care at Norton Audubon Hospital, Norton Brownsboro Hospital, Norton Clark Hospital, Norton Hospital, Norton King's Daughters' Health, Norton Scott Hospital, Norton Women's & Children's Hospital, Norton Cancer Institute, Norton Heart & Vascular Institute, Norton Neuroscience Institute, Norton Women's Care and other adult health programs.

Locations supported in the region

- 7** adult-service hospitals
- 17** Norton Immediate Care Centers
- 9** Norton Prompt Care clinics
- 240+** primary care and specialty locations

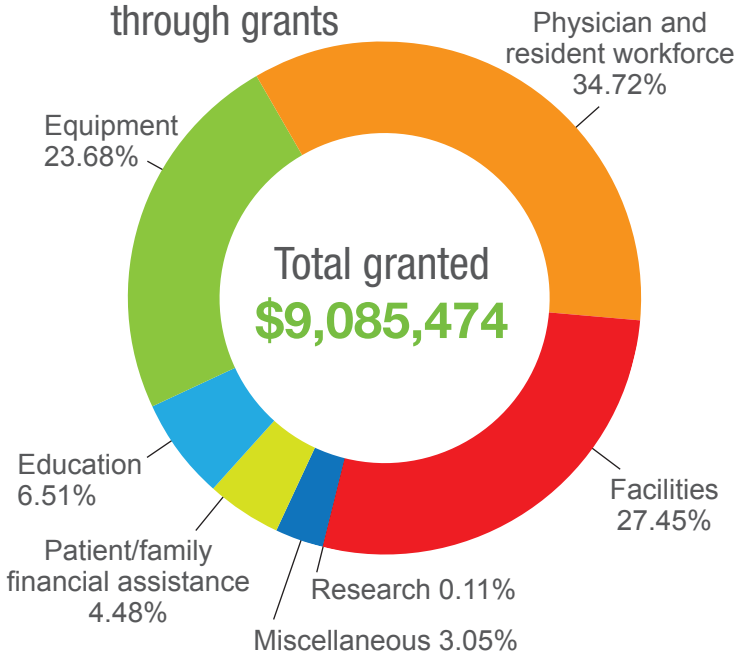


400,000+
patients served
in one year



More than
\$101 million*
granted
since 2004

Norton Healthcare funding through grants



30,000+
annual donors



Total raised
Over \$12.5 million*
in 2023

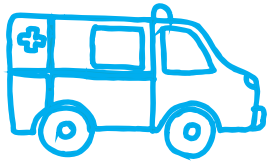
Total volunteer support:
7,360.75 hours x \$31.80
(current national value of a volunteer hour)
= \$234,071.85

*unaudited numbers

Funding projects that help the whole person

As a not-for-profit organization, our greatest reward is the health of our community. Your gift helps fund health services and programs that support the body, mind and spirit so no one has to go far from home to get comprehensive care that helps them heal.

The Norton Healthcare Foundation helped fund these services and programs:



FACILITIES AND TECHNOLOGY

Equipment for Norton Healthcare Bioskills Lab

Expansion of breast cancer surgery capabilities for Norton Brownsboro Hospital

Obstetrics virtual reality education software

Security mobile patrol vehicles



RESEARCH

Creation of Norton Research Institute

Abbott Equity in Research Project

Spine education and research funding



PATIENT CARE

Community health screenings and mammograms through Norton Prevention & Wellness Mobile Prevention Center

Vaccine partnership with Jefferson County Public Schools

Norton eCare School Telehealth

Norton Cancer Institute art therapy programming

Norton Prevention & Wellness programming

Heel, Dog, Heal facility dog program

Norton Cancer Institute community lectureships

Norton Women's Doula Program

Norton Neuroscience Institute Resource Center patient programming



SUPPORT

Pastoral care department services

Norton Cancer Institute food assistance program

Continuing education for nurses, physicians and staff

Norton Neuroscience Institute social worker dedicated to Parkinson's patients

Partnership with Louisville Coalition for Black Maternal Health

Medical Assistant Training Program



There are many ways to support Norton Healthcare.
Visit [NortonHealthcareFoundation.com](https://www.NortonHealthcareFoundation.com) to get involved.